

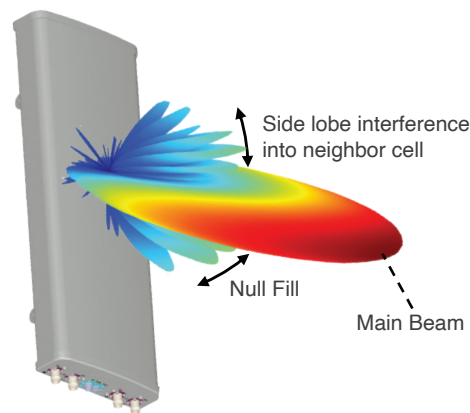
AW3161

3.3-3.8 GHz, 65° variable tilt, 4 port panel antenna with superior pattern control

FEATURES

- Wide-band antenna for 3GPP bands
- 4x4 MIMO with dual +/-45 slant polarization for maximum throughput
- Enhanced tilt range of 0 to 10 degrees
- Manual and enclosed Remote Electrical Tilt (MET/eRET) applies tilt equally for consistent coverage*
- High-strength, UV-protected PVC radome with hot-dip galvanized and stainless-steel mounting hardware for all-weather operation
- Optimized for frequency-reuse with LTE equipment and CBRS deployments

*Fixed tilt configurations available



UPPER SIDE LOBES (USL)

- Interferes with neighbor cells with elevation changes or when adding downtilt
- Large USL reduce signal to interference ratio (SINR) at cell edge
- AW3161 optimized with over 22dB USL suppression

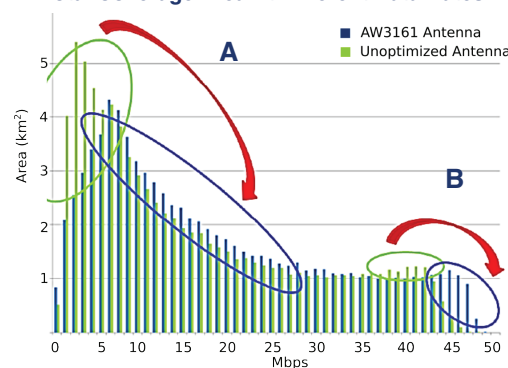
MAIN BEAM

- Provides main sectoral coverage
- AW3161's 7° elevation beamwidth and 17.9dBi gain provides optimal coverage area and boosts SINR

NULL FILL

- Improves near cell performance and removes dead zones

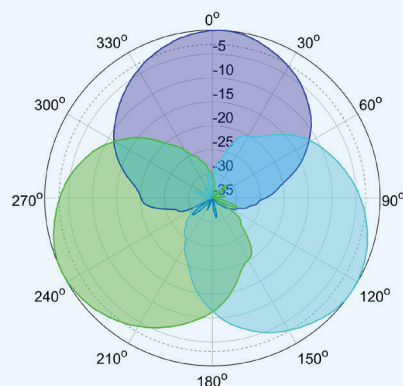
Total Coverage Area At Different Data Rates



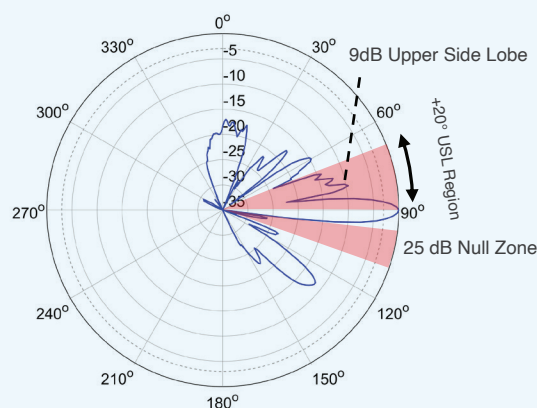
DATA SPEED

- A** The Cell Edge data rate is considerably improved due to the increased SINR afforded from USL suppression, null filling, and a broad elevation beamwidth. Low data rates (below 6 Mbps) are considerably reduced
- B** Higher data rates (above 42 Mbps) are boosted to a level that cannot be achieved using a non-optimized antenna

3 X AW3161 65° SECTOR



NON-OPTIMIZED ANTENNA



ALPHA WIRELESS ANTENNA

