



AWT2-3927

Common Name 36 Port (4P/8P x 3) 3.6M Low Band, Mid Band Modular Tri-Sector, T2 Series.

| | | | | |
|--------------|-------|------|------|-----------|
| 612-894MHz | 12 | eRET | 14.2 | 70° |
| 1695-2690MHz | 24 | eRET | 17.8 | 65° |
| Frequency | Ports | Tilt | Gain | Beamwidth |

PRODUCT INFORMATION

| Stack | Part Name | Description |
|-------|-----------------|--|
| 1 | Base Stack | The Base Stack contains Low Band and Mid Band sectors. There is a Mount Plate located on the bottom of the Base Stack to attach to the Monopole. |
| 2 | Extension Stack | The Extension stack contains Low Band and Mid Band sectors. |

The Modular Tri-Sector T2 Series is a flexible antenna platform designed for Streetwork deployments. The AWT2 Platform is made up using discrete parts. The AWT2-3927 consists of two modular antenna stacks which are detailed in the table below:

| Stack Type | Frequency Bands | Ports per Stack |
|-----------------|-----------------|-----------------|
| Base Stack | 612-894MHz | 6 |
| | 1695-2690MHz | 12 |
| Extension Stack | 612-894MHz | 6 |
| | 1695-2690MHz | 12 |

Each stack is made up of three panels that are positioned at 0°, 120° and 240° in the Azimuth plane. These individual panels are replaceable in the field for upgrade or maintenance purposes.

Note #1: The Alpha Wireless AWT2 series can only support a single Base Stack and a single Extension Stack. The Alpha Wireless AWT4 series can support a single Base Stack and up to three Extension Stacks.

Note #2: Both the AWT2 and AWT4 have a mounting plate to enable mounting number of Active Antenna units on top, weight permitting.

APPLICATION

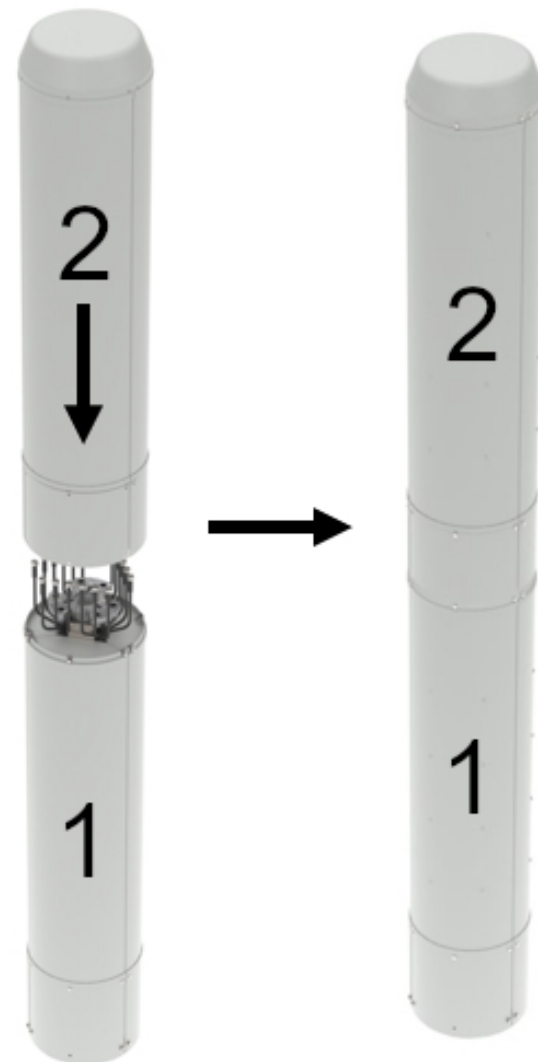
Sector antennas support multiple antennas into one attractive package. These canisters deliver an elegant macro solution for pole-top, rooftop and streetworks applications. Alpha Wireless produces one of the smallest diameter canisters in the marketplace.

STANDARD & CERTIFICATIONS

| | |
|---------------|---------------------|
| Certification | BS EN ISO 9001:2015 |
|---------------|---------------------|



The parameters in this specification follow the definitions and recommendations per NGMN P-Basta, Release 9.6.



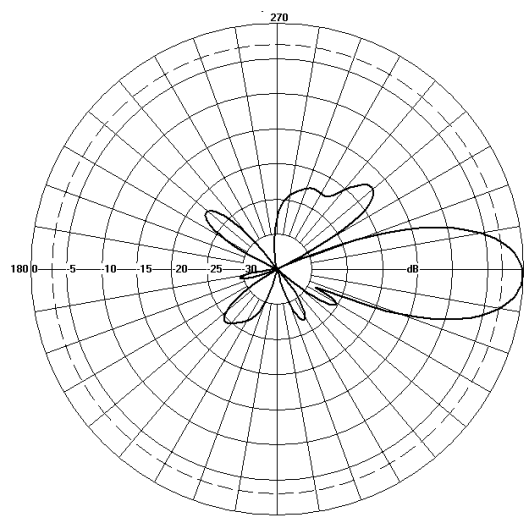
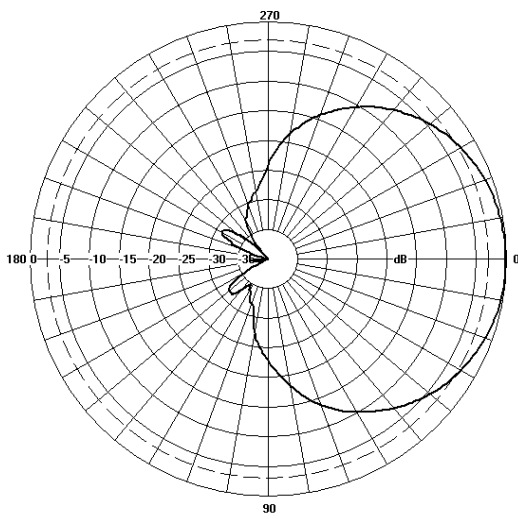
FEATURES

- The AWT2 Series supports up to two modular stacks.
- Field upgradable sectors without decommissioning the other sectors.
- Three sector canister with sectors orientated at 0°, 120° and 240° in the Azimuth Plane
- 612-894MHz x 2 Ports per sector.
- 1695-2690MHz x 4 Ports per sector.
- 612-894MHz tilt range T2° - T12°.
- 1695-2690MHz tilt range T2° - T12°.
- Low PIM performance to reduce interference.

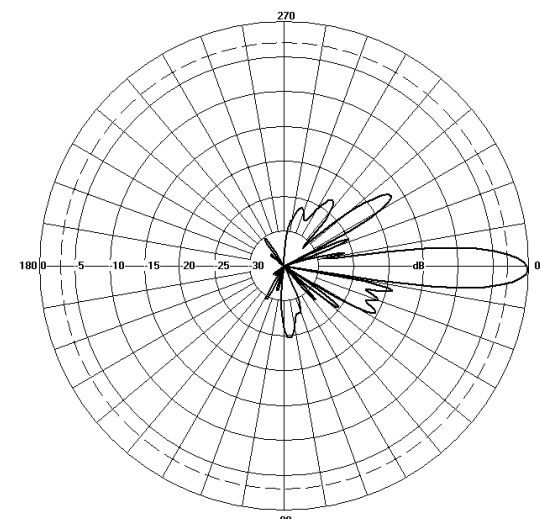
TECHNICAL SPECIFICATION

| Electrical Specifications | | Low Band | | | Mid Band | | | |
|---|---------|----------------------|----------|----------|------------|-----------|-----------|----------|
| Frequency Range | MHz | 612-707 | 707-802 | 802-894 | 1695-1920 | 1920-2170 | 2300-2690 | |
| Polarisation | Degree | +/- 45° Slant Linear | | | | | | |
| Gain | Basta | dB | 13.1±0.5 | 13.8±0.5 | 14.1±0.5 | 16.8±0.5 | 17.1±0.5 | 17.0±0.5 |
| | Max | dB | 13.6 | 14.3 | 14.6 | 17.3 | 17.6 | 17.5 |
| Azimuth Beamwidth | Degree | 76° | 77° | 77° | 64° | 67° | 66° | |
| Elevation Beamwidth | Degree | 18.1° | 15.5° | 14.0° | 7.2° | 6.5° | 5.5° | |
| Electrical Downtilt | Degree | T2° - T12° | | | T2° - T12° | | | |
| Electrical Downtilt Deviation | Degree< | 1.5° | 1.5° | 1.5° | 1° | 1° | 1° | |
| Impedance | Ohms | 50 | | | | | | |
| VSWR | < | 1.5 | | | | | | |
| Return Loss | dB> | 14 | | | | | | |
| Isolation | dB> | 25 | 25 | 25 | 25 | 25 | 25 | |
| Passive Intermodulation | dBc< | -150 | -150 | -150 | -150 | -150 | -150 | |
| Upper Sidelobe Suppression, Peak to 20° | dB> | 16 | 16 | 16 | 15 | 15 | 15 | |
| Cross-Polar Discrimination | dB> | 15 | 15 | 15 | 15 | 15 | 15 | |
| Max Power Per Port | W | 300 | | | 250 | | | |

Radiation Pattern Files



Low Band



Mid Band

Azimuth

Elevation

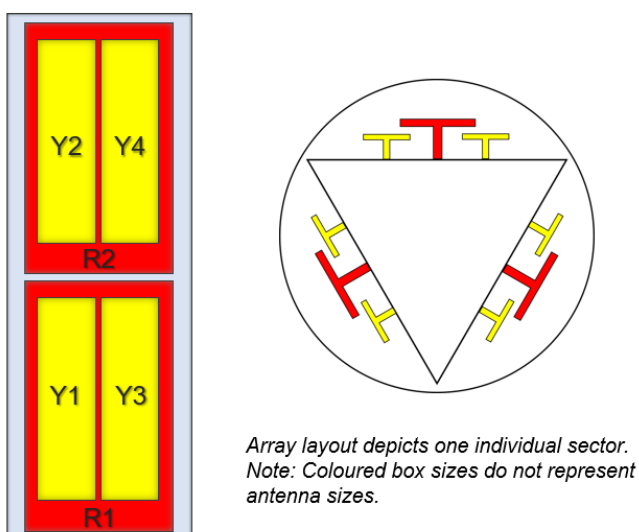
For radiation pattern files, please login at www.alphawireless.com

TECHNICAL SPECIFICATION

Mechanical Specifications

| | | |
|---|------------|---------------------------------------|
| Dimensions Base + Extension(s) (Length x Diameter) | mm (in) | 3615 (142.3) x 406 (16) - (L x Ø) |
| Dimensions Base (Length x Diameter) | mm (in) | 1911 (75.3) x 406 (16) - (L x Ø) |
| Dimensions Extension (Length x Diameter) | mm (in) | 1704 (67.0) x 406 (16) - (L x Ø) |
| Weight of Base Stack | kg (lb) | 96.5 (212.3) |
| Weight of Extension Stack | kg (lb) | 74.5 (163.9) |
| Total Tri-Sector Weight | kg (lb) | 171 (377) |
| Connector Type (Female) | - | 4.3-10 |
| Connector Position | - | Bottom |
| Connector Quantity | - | 36 (12P Low Band, 24P Mid Band) |
| Windload Frontal (at Rated Wind Speed: 150km/h) | N (lbf) | 1194 (270) |
| Windload Lateral (at Rated Wind Speed: 150km/h) | N (lbf) | 1194 (270) |
| Survival Wind Speed | km/h (mph) | 200 (125) |
| Radome Material | - | UV Stabilised ASA capped ABS |
| Radome Colour | RAL | 7035 (light grey) |
| Product Compliance Environmental | - | RoHS |
| Lightning Protection | - | DC Grounded |
| Cold Temperature Survival | °C (°F) | -40° C (-40° F) |
| Hot Temperature Survival | °C (°F) | 70° C (158° F) |
| Shipping Information | - | - |
| Size of Crate Type 1 - Base Stack and Interface (LxWxD) | mm (in) | 2100 (82.6) x 570 (22.4) x 628 (24.7) |
| Size of Crate Type 2 - Extension Stack (LxWxD) | mm (in) | 2100 (82.6) x 570 (22.4) x 628 (24.7) |
| Shipping Weight of Crate Type 1 - Base Stack | kg (lb) | 149 (327.8) |
| Shipping Weight of Crate Type 2 - Extension Stack | kg (lb) | 127 (279.4) |
| Total Number of Crates (Types 1 and 2) | Quantity | |

Array Layout and RET Information

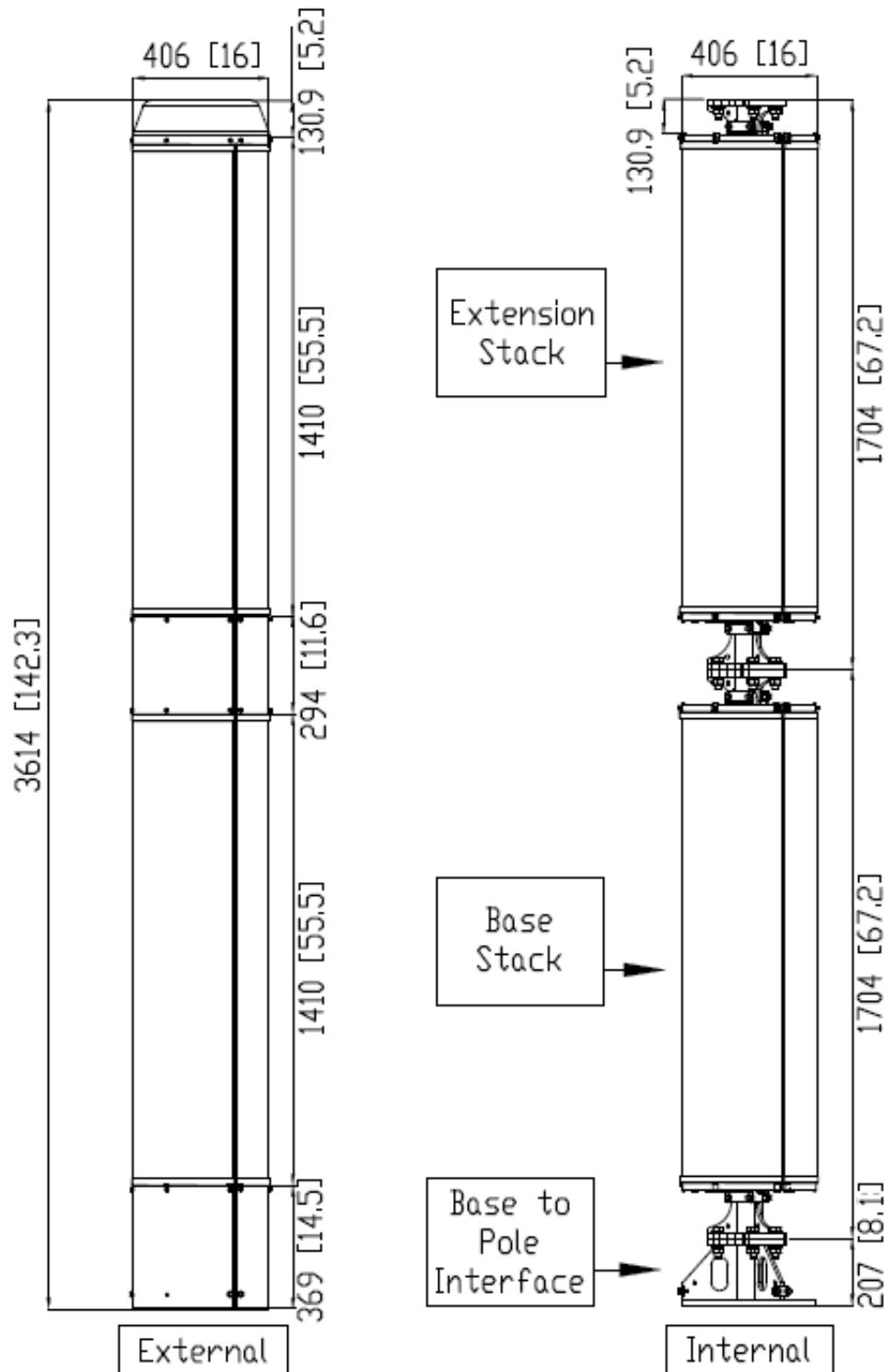


| Array | Frequency MHz | Ports | RET |
|-------|---------------|---------|-----|
| R1 | 612 - 894 | 1 - 2 | 1 |
| R2 | 612 - 894 | 3 - 4 | 2 |
| Y1 | 1695 - 2690 | 5 - 6 | 3 |
| Y2 | 1695 - 2690 | 7 - 8 | 4 |
| Y3 | 1695 - 2690 | 9 - 10 | 5 |
| Y4 | 1695 - 2690 | 11 - 12 | 6 |

| Configuration | |
|-------------------------|--|
| 612- 894 MHz | One RET per array: R1, R2 x 3 Sectors |
| 1695-2690 MHz | One RET per array: Y1, Y2, Y3, Y4 x 3 Sectors |
| Total Quantity | Eighteen RET Motor Controllers |
| Location and Interface | |
| RET Controller Location | Inside antenna radome housing |
| RET Interface | Two Pair of AISG 8 Pin DIN connectors: male/female |
| RET Interface Quantity | Two Pair of AISG connectors per sector x 3 sectors |
| RET Interface Location | On connector plate located at bottom of antenna |
| Electrical | |
| Input Voltage | 10 - 30V |
| Power Idle Mode | < 1W |
| Power Active Mode | < 10W |
| Protocol | 3GPP / AISG 2.0 |

TECHNICAL SPECIFICATION

Mechanical Illustration



Description of Parts

| | |
|----------------------------|---|
| Base Stack | This contains the Antenna Sectors. Mounted onto the Base Stack Interface. The top of the Base Stack has a mounting flange onto which the Extension Stack is mounted. |
| Extension Stack | This contains the Antenna Sectors. Mounted onto the Base Stack. The bottom of the Base Stack has a mounting flange onto which the Extension Stack is mounted to the base stack. |
| RF Jumpers Base Stack | Feeders from the Radio Cabinet feed directly into the connectors located at the bottom of the Base Stack. |
| RF Jumpers Extension Stack | RF Jumpers are routed behind the Base Stack Radomes. |

TECHNICAL SPECIFICATION

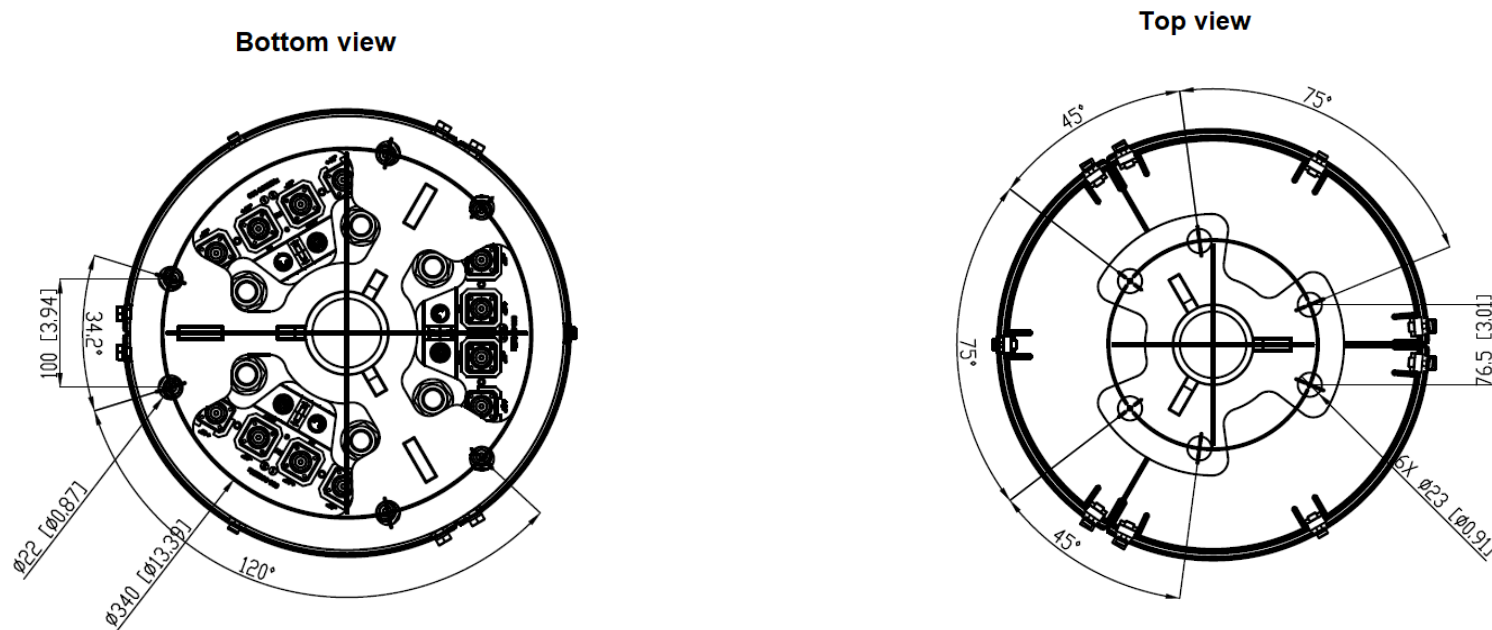
Connector Plate Images

| | |
|--|---|
| | <p>Showing Low Band / Mid Band Connector Plate located at bottom of Extension Stack.</p> |
| | <p>Each RET Motor is located at the bottom of each antenna sector as part of the Connector Plate. Each RET motor can be accessed individually and if necessary replaced individually by releasing two screws and sliding out the RET Motor Cartridge. A new RET Motor Cartridge can be slid back in as replacement.</p> |

TECHNICAL SPECIFICATION

Mounting Bracket Kit

3 inch Bracket description



| Mounting Kit Tilt Range | Mounting Kit Material | Mounting Kit Pole Diameter |
|-------------------------|-----------------------|----------------------------|
| 0 | Galvanized Steel | N/A |

Ordering Info

| Order Code - Antenna | Description |
|--------------------------|--|
| AWT2-3927 | Enclosed Remote Electrical Tilt (eRET) with 4.3-10 Connectors. |
| Order Code - Accessories | Description |
| AW1012-2-FM-NM | RF Jumper Cable, connector types 4.3-10 (m) / N-Type (m), length 2 metres (6'6") |
| AW1014-2-FM-TM | RF Jumper Cable, connector types 4.3-10 (m) / Nex10 (m), length 2 metres (6'6") |
| PADC 1000 | Portable AISG Controller |
| AW0326-3-PM-PF | AISG Jumper Cable Lengths 3 metres (9' 10") |
| AW0326-10-PM-PF | AISG Jumper Cable Lengths 10 metres (32' 9") |

Enquiries

Global Headquarters
Ashgrove Business Centre,
Ballybrittas, Portlaoise,
R32 DTOA, IRELAND
sales@alphawireless.com
+353 57 86 33847

North America
7301 W. 129th Street, Suite 150,
Overland Park,
KS 66213, USA
sales@alphawireless.com
+1 913 279 0008

Australia
3/76 Regentville Rd,
Jamisontown,
NSW 2750, AUSTRALIA
sales@alphawireless.com
+ 61 2 4504 8212

DISCLAIMER

The information in this document is provided solely regarding Alpha Wireless products. The information is not a guarantee of performance or characteristics. Alpha Wireless reserves the right to modify, change, amend, improve or make corrections to this document and its products, at any time and its sole discretion without prior written consent or notice. No license to any intellectual property rights is granted or implied under this document. Alpha Wireless disclaims warranties and liabilities of any kind including non-infringement of intellectual property rights of any third party.

© Alpha Wireless Limited 2022