



AW3624-E-F

Common Name 4 Port, (2P/2P) 1.4M Mid Band & High Band Panel

1452-2400MHz	2	eRET	17.1	65°
1710-2690MHz	2	eRET	17.8	65°
Frequency	Ports	Tilt	Gain	Beamwidth

PRODUCT INFORMATION

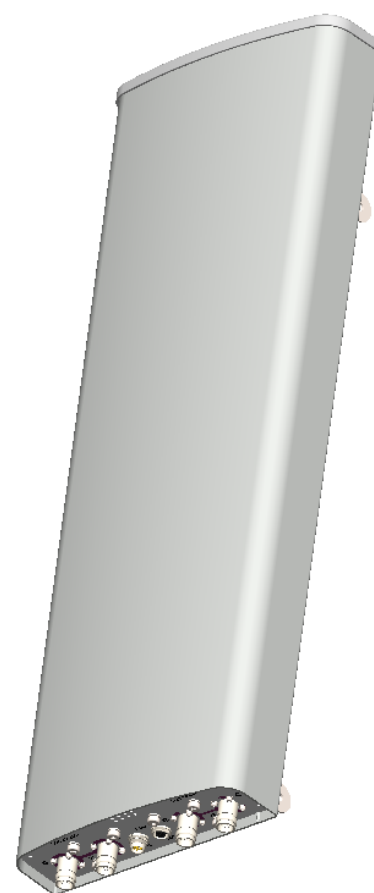
This product offers Mid-band as well as High-Band functionality.

APPLICATION

Alpha Wireless multi-band antennas provide wireless network operators the highest performance and quality. Panel antennas are generally used in sectorized applications. Remote electrical tilt allows instant optimization to improve coverage and throughput.

STANDARD & CERTIFICATIONS

Certification	BS EN ISO 9001:2015
---------------	---------------------



FEATURES

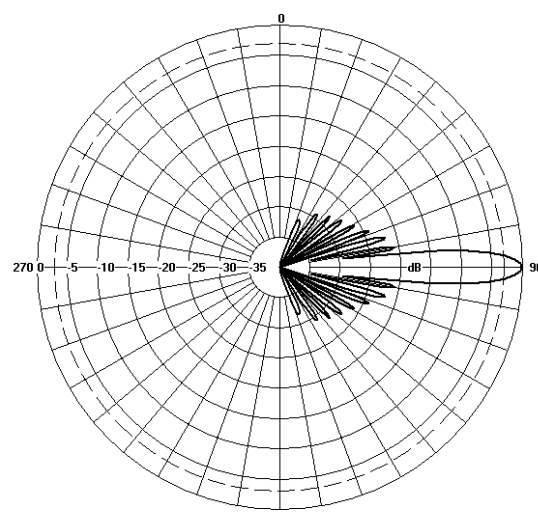
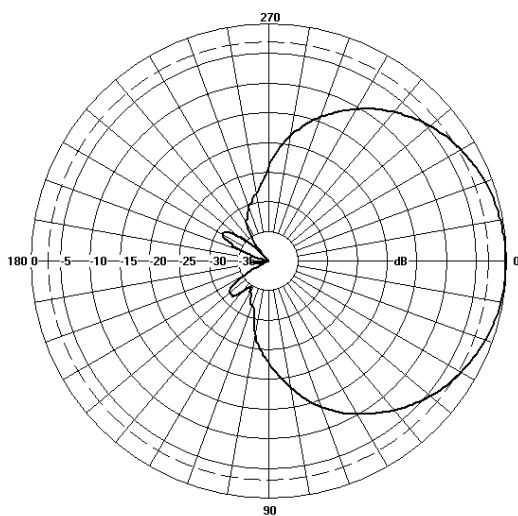
- Multi-band Panel antenna
- RET Tilt Range on each band
- AISG 2.0 compatible
- Manufactured in Ireland

The parameters in this specification follow the definitions and recommendations per NGMN P-Basta, Release 9.6.

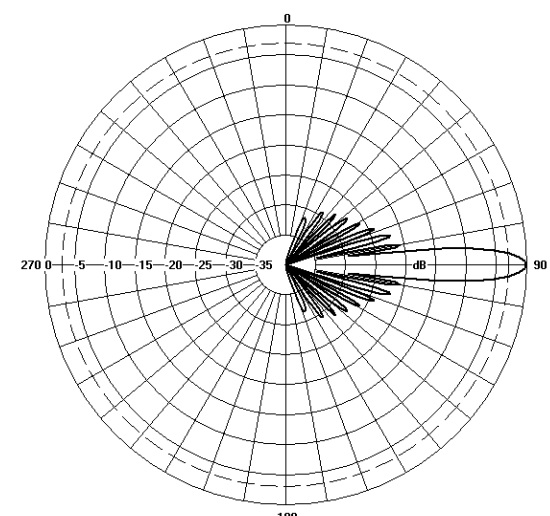
TECHNICAL SPECIFICATION

Electrical Specifications								
Frequency Range	MHz	1452-1492	1710-2170	2300-2400	1710-1920	1920-2170	2300-2690	
Polarisation	Degree	+/- 45° Slant Linear						
Gain	Basta	dBi	16.0±0.5	16.7±0.5	16.6±0.5	16.8±0.5	17.1±0.5	17.3±0.5
	Max	dBi	16.5	17.2	17.1	17.3	17.6	17.8
Azimuth Beamwidth	Degree	75°	68°	68°	69°	64°	60°	
Azimuth Beam Squint	Degree<	3°						
Elevation Beamwidth	Degree	7.0°	6.3°	6.2°	6.5°	6.2°	6.0°	
Electrical Downtilt	Degree	T2°-T10°	T2°-T10°	T2°-T10°	T0°-T10°	T0°-T10°	T0°-T10°	
Electrical Downtilt Deviation	Degree<	1°	1°	1°	1°	1°	1°	1°
Impedance	Ohms	50						
VSWR	<	1.5						
Return Loss	dB>	14						
Isolation	dB>							
Intraband Isolation (same band/same array)	dB>	27	27	27	27	27	27	27
Interband Isolation (different band and array)	dB	27	27	27	27	27	27	27
Passive Intermodulation	dBc<	-150	-150	-150	-150	-150	-150	-150
Upper Sidelobe Suppression, Peak to 20°	dB>	16	16	16	16	16	16	16
Cross-Polar Discrimination (0°)	dB>	15	15	15	15	15	15	15
Maximum Effective Power Per Port	W	250	250	250	250	250	250	250

Representative Pattern Files



1452 - 2400MHz



1710 - 2690MHz

Azimuth

Elevation

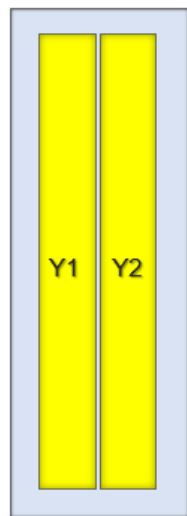
For radiation pattern files, please login at www.alphawireless.com

TECHNICAL SPECIFICATION

Mechanical Specifications

Dimensions	mm (in)	1350 (53.1) x 280 (11) x 125 (4.9) - (LxWxH)
Packing Size (LxWxD)	mm (in)	1450 (57.1) x 340 (13.3) x 178 (7)
Net Weight (antenna)	kg (lb)	14 (30.9)
Net Weight (mount)	kg (lb)	3 (6.6)
Shipping Weight	kg (lb)	17 (37.5)
Connector Type (Female)	-	4.3-10
Connector Position	-	Bottom
Connector Quantity	-	4 (2P Mid band, 2P High Band)
Windload Frontal (at Rated Wind Speed: 150km/h)	N	410 (92)
Windload Lateral (at Rated Wind Speed: 150km/h)	N	215 (125)
Survival Wind Speed	km/h (mph)	200 (125)
Radome Material	-	UV-Stabilised PVC
Radome Colour	RAL	7035 (light grey)
Product Compliance Environmental	-	RoHS
Lightning Protection	-	DC Grounded
Cold Temperature Survival	Celsius (Fahrenheit)	-40 (-40)
Hot Temperature Survival	Celsius (Fahrenheit)	70 (158)

Array Layout and RET Information

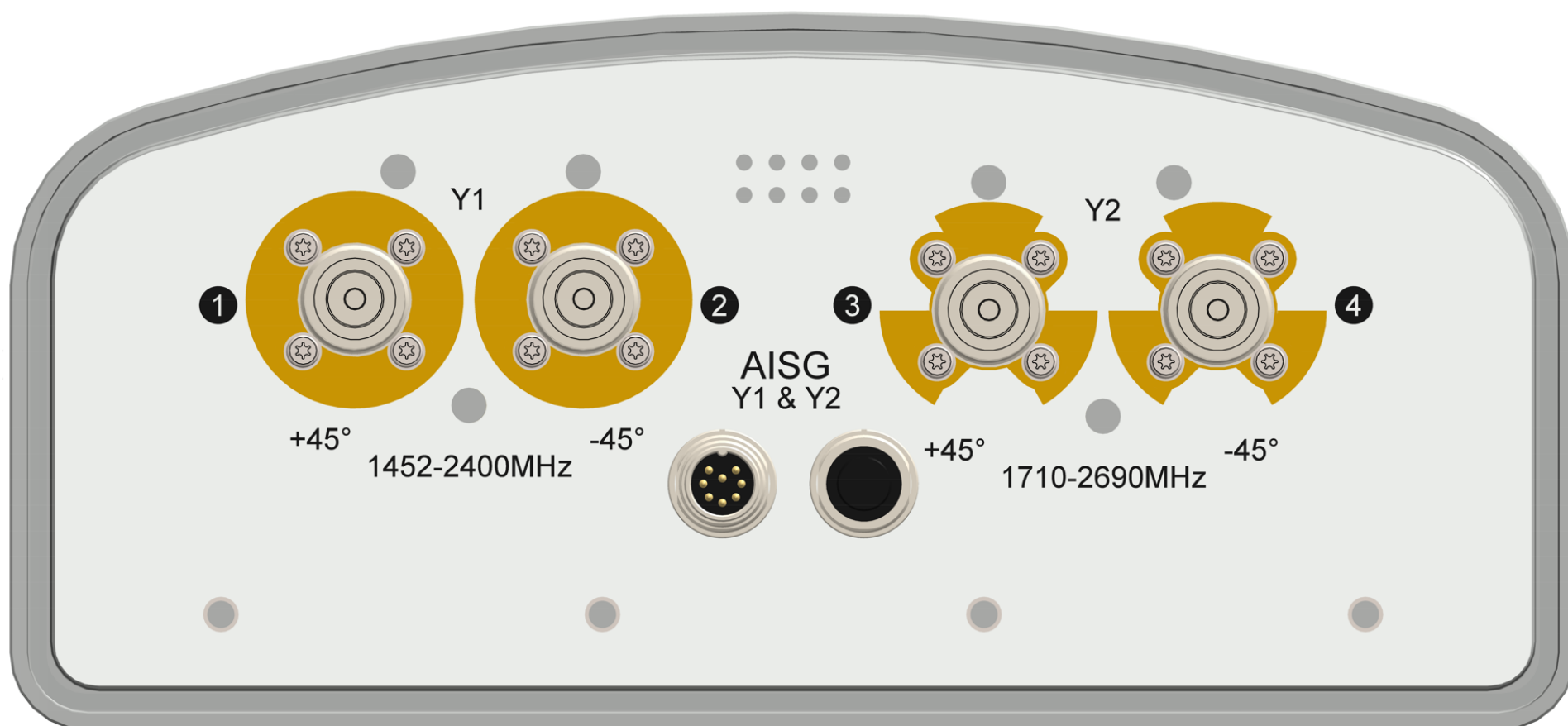
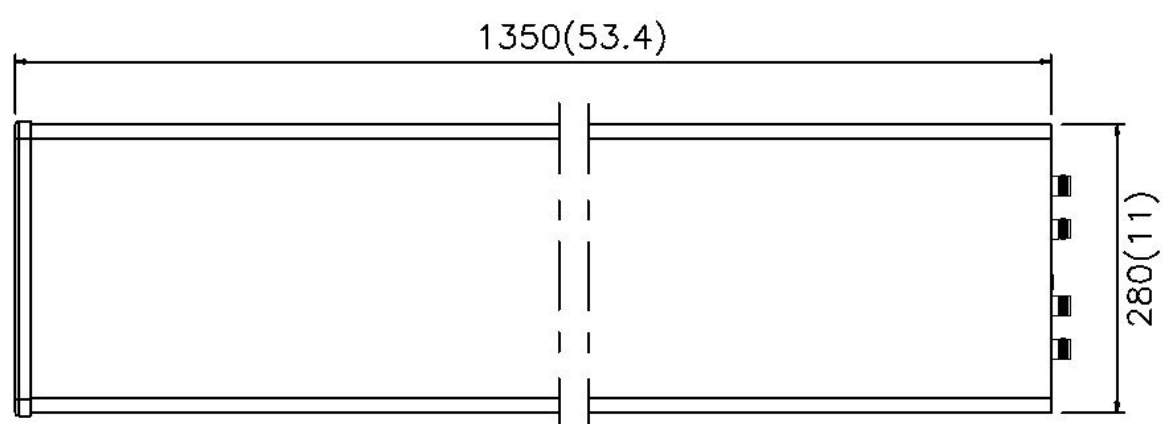
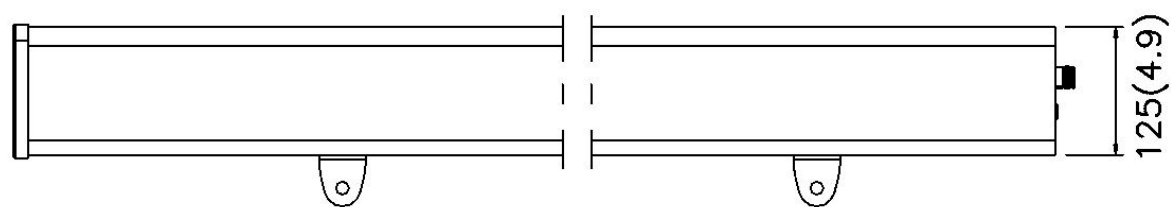
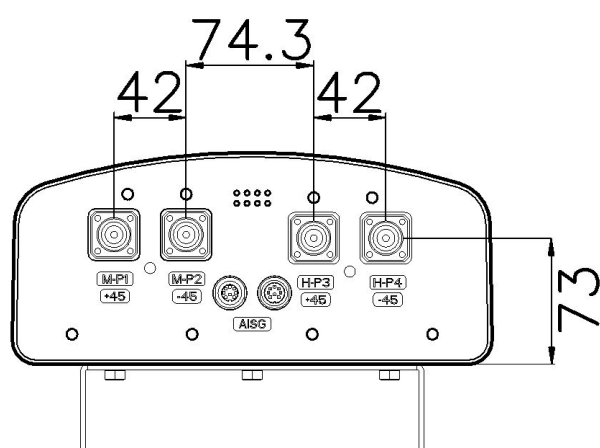


Note: Coloured box sizes do not represent antenna sizes.

Array	Frequency MHz	Ports	RET ID
Y1	1452 - 2400	1 - 2	1
Y2	1710 - 2690	3 - 4	2

Configuration	
1452 - 2400MHz	One RET for array : Y1
1710 - 2690MHz	One RET for array : Y2
Total Quantity	Two RET Motor Controllers
Location and Interface	
RET Controller Location	Inside antenna radome housing
RET Interface	Pair of AISG 8 Pin DIN connectors, one male, one female
RET Interface Quantity	One pair of AISG 8 Pin DIN connectors
RET Interface Location	On connector plate located at bottom of antenna
Electrical	
Input Voltage	10 - 30V
Power Idle Mode	< 1W
Power Active Mode	< 10W
Protocol	3GPP / AISG 2.0

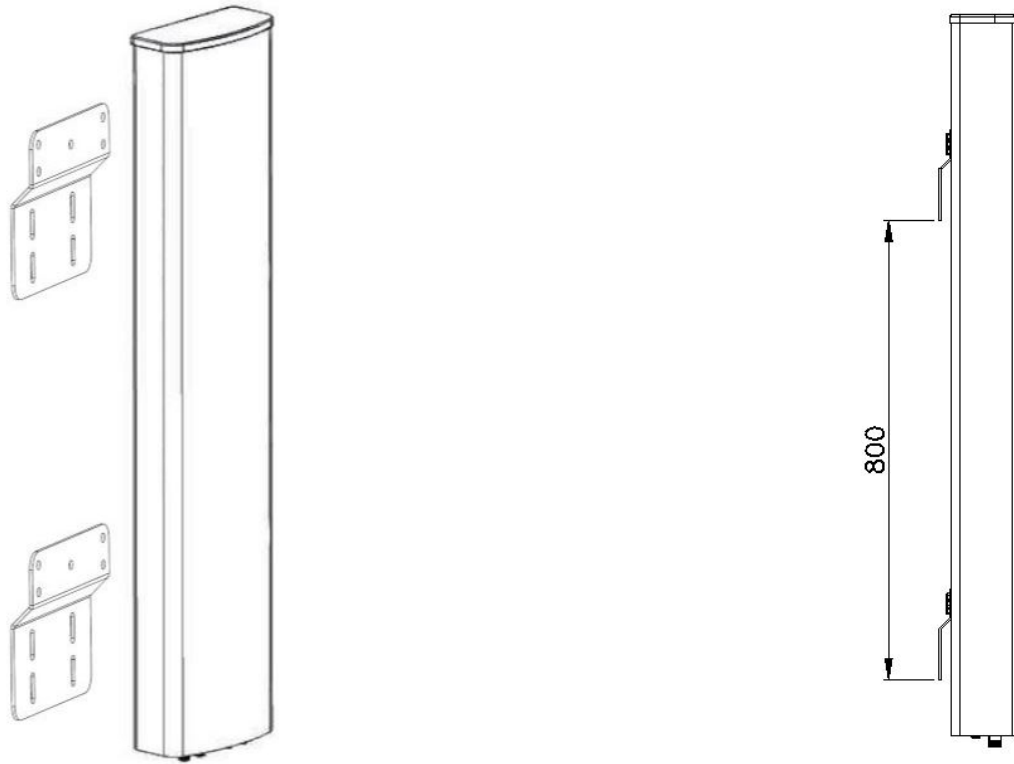
Mechanical Illustration



TECHNICAL SPECIFICATION

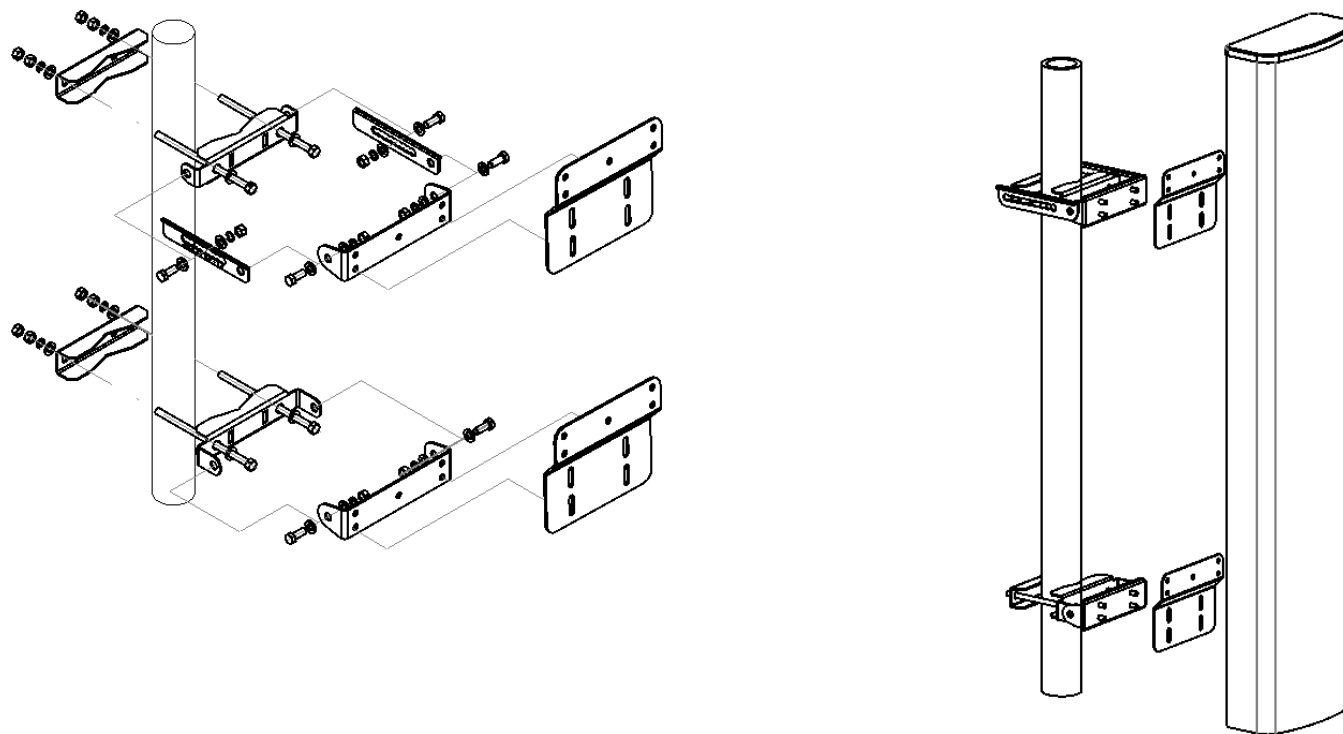
Mounting Bracket Kit

Z-Bracket (Customer Specific Mounting Bracket)



Mounting Kit Tilt Range	Mounting Kit Material	Mounting Kit Pole Diameter
N/A	Stainless Steel	N/A

CL-V-165 Mount kit. (Includes Adapter Plate to fit Adjustable Tilt Bracket to existing Z-bracket)



Mounting Kit Tilt Range	Mounting Kit Material	Mounting Kit Pole Diameter
+1° to -7°	Stainless Steel	50mm-115mm (2" to 4.5")

TECHNICAL SPECIFICATION**Ordering Info****Order Code - Antenna**

AW3624-E-F

AW3624-E-F-CL-V-165

Order Code - Accessories

AW1012-2-FM-FM

AW1012-2-FM-NM

AW1014-2-FM-TM

PADC 1000

SADC 2000

AW0326-3-PM-PF

AW0326-10-PM-PF

AW0326-25-PM-PF

AW0326-50-PM-PF

Description

Enclosed Remote Electrical Tilt (eRET) with 4.3/10 Connectors with Z-Bracket.

Enclosed Remote Electrical Tilt (eRET) with 4.3/10 Connectors and CL-V-110 Mount Kit.

Description

RF Jumper Cable, connector types 4.3-10 (m) / 4.3-10 (m), length 2 metres (6'6")

RF Jumper Cable, connector types 4.3-10 (m) / N-Type (m), length 2 metres (6'6")

RF Jumper Cable, connector types 4.3-10 (m) / Nex10 (m), length 2 metres (6'6")

Portable AISG Controller

Site AISG Controller

AISG Jumper Cable Lengths 3 metres (9' 10")

AISG Jumper Cable Lengths 10 metres (32' 9")

AISG Jumper Cable Lengths 25 metres (82')

AISG Jumper Cable Lengths 50 metres (164')

Enquiries**Global Headquarters**Ashgrove Business Centre,
Ballybrittas, Portlaoise,
R32 D0A, IRELAND
sales@alphawireless.com
+353 57 86 33847**North America**7301 W. 129th Street, Suite 150,
Overland Park,
KS 66213, USA
sales@alphawireless.com
+1 913 279 0008**Australia**3/76 Regentville Rd,
Jamisontown,
NSW 2750, AUSTRALIA
sales@alphawireless.com
+ 61 2 4504 8212**DISCLAIMER**

The information in this document is provided solely regarding Alpha Wireless products. The information is not a guarantee of performance or characteristics. Alpha Wireless reserves the right to modify, change, amend, improve or make corrections to this document and its products, at any time and its sole discretion without prior written consent or notice. No license to any intellectual property rights is granted or implied under this document. Alpha Wireless disclaims warranties and liabilities of any kind including non-infringement of intellectual property rights of any third party.

© Alpha Wireless Limited 2022