



...Change the way wireless networks are built.

# SMALL CELL ANTENNA SOLUTIONS

Powerful | Versatile | Discreet





## OVERVIEW

- As consumers' appetite for mobile connectivity and data soars, wireless network operators are seeing capacity pushed to its limits. In densely populated urban areas, where there is a higher concentration of demand and a lack of suitable cell sites, the problem is exacerbated.

At Alpha Wireless our ultra-compact, small cell antenna solutions are designed to help wireless network operators increase their capacity and coverage and solve this rising demand problem. They are multiport, multiband and have been designed and engineered to provide optimum power, low interference level and high capacity to areas where it is really needed while equally retaining their discreet form factor.

### Latest Small Cell Innovations:

High Port Count enables multiple operators

Low band capability options available down to 617 MHz

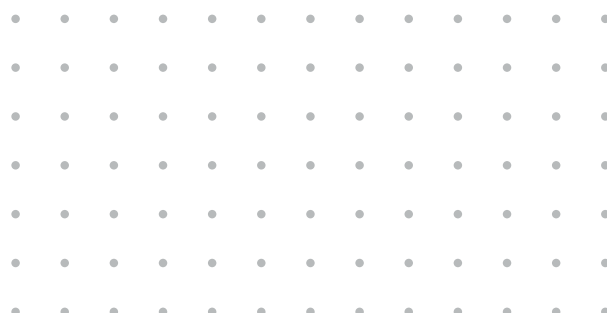
Licensed Assisted Access (LAA) and Citizens Broadband Radio Services (CBRS) with unlicensed 3.5 and 5 GHz bands covered

Fully Integrated, All-In-One concealment antenna solutions reduce rent, backhaul and potentially power costs

Low Visual Impact Solutions  
#VisuallyAmbient

Versatile mounting options available – wall, pole, roof, vertical structures

Our small cell antenna family can be easily approved by the most unyielding municipal zoning and permitting authorities, often saving months in deployment time. They cover a wide variety of applications and deployment scenarios and deliver affordable capacity to urban and rural areas.



SMALL CELL  
ANTENNA  
PRODUCT  
SUMMARY

	Frequency	Ports	Azimuth Beamwidth	Gain	Page
+ AW3372	3300-3800MHz	2	65°	12.5	4
+ AW3373	3300-3800MHz	2	90°	11	4
+ AW3387	1710-2690MHz	2	65°	12.5	4
+ AW3463	698-960MHz	2	65°	12	4
+ AW3724	617-894/1695-2690/3400-3800/ 5150-5925MHz	18	65°	7/14/11/6	5
+ AW3725	617-894/1695-2690/3400-3800/ 5150-5925MHz	24	65°	11/14/11/6	5
+ AW3744	617-894/1695-2690/3400-3800/ 5150-5925MHz	12	65°	7 /14/11/6	5
+ AW3791	698-894/1695-2690/3400-3800/ 5150-5925MHz	18	65°/65°	7/14/11/6	5
+ AW3770	3300-3800MHz	4	65°	12.5	6
+ AW3778	3300-3800MHz	2	120°	10	6
+ AW3799	617-894/1695-2690MHz	18	65°	8/8	6
+ AW3751	617-894/1695-2690/3400-3800/ 5150-5925MHz	12	65°/65°	5/11/8/6	6
+ AW3755	617-894/1695-2690MHz/3400-3800/ 5150-5925MHz	12	65°	7/14/11/6	7
+ AW3759	617-894/1695-2690MHz/3400-3800/ 5150-5925MHz	24	65°/65°	7/14/11/6	7
+ AW3763	617-894/1695-2690MHz/3400-3800/ 5150-5925MHz	24	65°/65°	7/14/11/6	7
+ AW3832	698-960/1695-2690MHz	24	65°	7/14	7
+ AW3834	698-960/1695-2690MHz	16	65°/65°	7/14	8
+ AW3845	698-960/1695-2690MHz	18	65°	10/14	8
+ AW3374	3400-3800MHz	2	360°	7	8
+ AW3388	1710-2690MHz	2	360°	6.7	8
+ AW3464	698-960MHz	2	360°	6.5	9
+ AW3499	3400-3800MHz	4	360°	6.5	9
+ AW3613	2496-2690MHz	4	360°	8.5	9
+ AW3620	2496-2690MHz	4	360°	8.5	9
+ AW3625	3300-3800MHz	2	360°	8.5	9
+ AW3672	3400-3800MHz	4	360°	8.5	10
+ AW3719	1695-2690/3400-3800/5150-5925MHz	10	360°	8/5/5	10
+ AW3747	617-894/1695-2690/3400-3800/ 5150-5925MHz	12	360°	2/8/5/5	10
+ AW3768	1695-2690/3400-3800/5150-5925MHz	10	360°	8/5/5	10
+ AW3776	2496-2690/3300-4200MHz	2	360°	5.5/7	11
+ AW3821	703-803MHz	2	360°	7.7	11
+ AW3826	2496-2690/3300-4200MHz	2	360°	5.5/7	11
+ AW3848	698-960/1695-2690MHz	6	360°	5/8.5	11

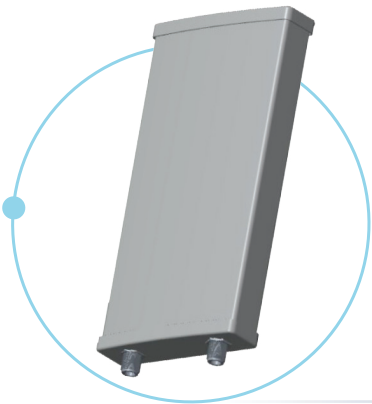
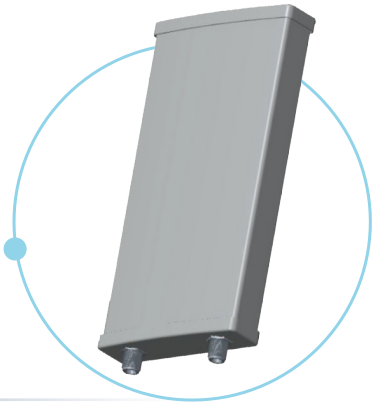
# ALPHA WIRELESS OUTDOOR SMALL CELL ANTENNA SOLUTIONS

## SMALL CELL PANEL ANTENNAS

### AW3372

Frequency	3300-3800 MHz
Port	2
Beamwidth	65°
Gain	12.5 dBi

- Length – 303mm (11.9") x Width 140mm (5.5") x Height 35mm (1.3")



### AW3373

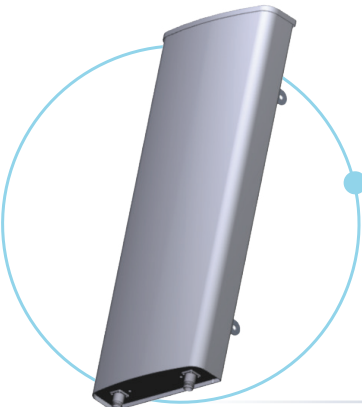
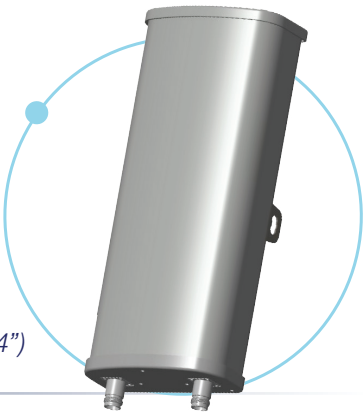
Frequency	3300-3800 MHz
Port	2
Beamwidth	90°
Gain	11 dBi

- Length – 303mm (11.9") x Width 140mm (5.5") x Height 35mm (1.3")

### AW3387

Frequency	1710-2690 MHz
Port	2
Beamwidth	65°
Gain	12.5 dBi

- Length – 400mm (15.7") x Width 167mm (6.5") x Height 88mm (3.4")



### AW3463

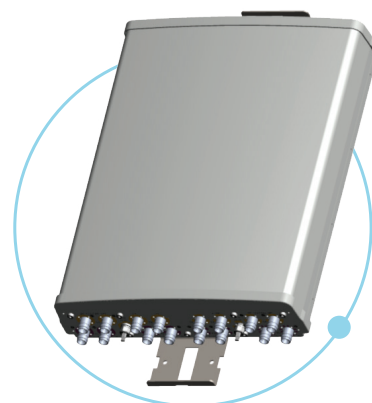
Frequency	698-960 MHz
Port	2
Beamwidth	65°
Gain	12 dBi

- Length – 935mm (36.8") x Width 280mm (11") x Height 123mm (4.8")

## AW3724

Frequency	617-894 MHz	1695-2690 MHz	3400-3800 MHz	5150-5925 MHz
Port	4	8	4	2
Beamwidth	65°	65°	65°	65°
Gain	7 dBi	14 dBi	11 dBi	6 dBi

- Length – 610mm (24") x Width 508mm (20") x Height 170mm (6.7")



## AW3725

Frequency	617-894 MHz	1695-2690 MHz	3400-3800 MHz	5150-5925 MHz
Port	4	8	8	4
Beamwidth	65°	65°	65°	65°
Gain	11 dBi	14 dBi	11 dBi	6 dBi

- Length – 1219mm (48") x Width 499mm (19.6") x Height 164mm (6.5")

Integrated  
RET



## AW3744

Frequency	617-894 MHz	1695-2690 MHz	3400-3800 MHz	5150-5925 MHz
Port	4	4	2	2
Beamwidth	65°	65°	65°	65°
Gain	7 dBi	14 dBi	11 dBi	6 dBi

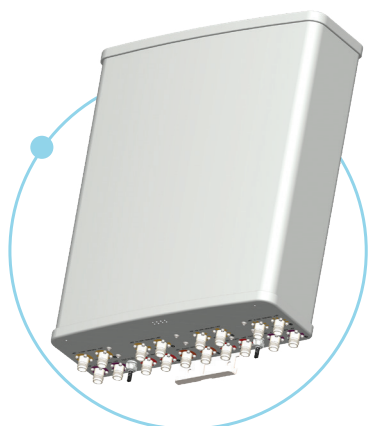
- Length – 610mm (24") x Width 330mm (13.0") x Height 157mm (6.21")



## AW3791

Frequency	698-894 MHz	1695-2690 MHz	3400-3800 MHz	5150-5925 MHz
Port	4	8	4	2
Beamwidth	65°	65°	65°	65°
Gain	7 dBi	14 dBi	11 dBi	6 dBi

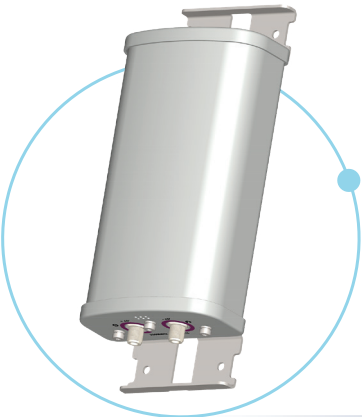
- Length – 610mm (24") x Width 508mm (20") x Height 170mm (6.7")



### AW3770

Frequency	3300-3800 MHz
Port	4
Beamwidth	65°
Gain	12.5 dBi

- Length – 364mm (14.3") x Width 280mm (11") x Height 85mm (3.3")



### AW3778

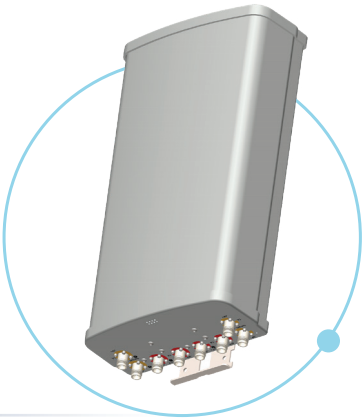
Frequency	3300-3800 MHz
Port	2
Beamwidth	120°
Gain	10 dBi

- Length – 354mm (14.3") x Width 160mm (6.2") x Height 81mm (3.1")

### AW3799

Frequency	617-894 MHz	698-2690 MHz
Port	4	12
Beamwidth	65°	65°
Gain	8 dBi	8dBi

- Length – 610mm (24") x Width 322mm (12.6") x Height 147mm (5.8")



### SMALL CELL PANEL IN A CANISTER



### AW3751

Frequency	617-894 MHz	1695-2690 MHz	3400-3800 MHz	5150-5925 MHz
Port	4	4	2	2
Beamwidth	65°	65°	65°	65°
Gain	5 dBi	11 dBi	8 dBi	6 dBi

- 610mm (24") x 365mm (14.3") - (LxD)

### AW3755

Frequency	617-894 MHz	1695-2690 MHz	3400-3800 MHz	5150-5925 MHz
Port	4	4	2	2
Beamwidth	65°	65°	65°	65°
Gain	7 dBi	14 dBi	11 dBi	6 dBi

- 610mm (24") x 365mm (14.4") - (LxD)



### AW3759

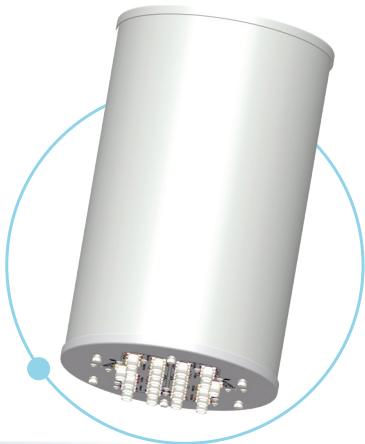
Frequency	617-894 MHz	1695-2690 MHz	3400-3800 MHz	5150-5925 MHz
Port	4 + 4	4+4	2 +2	2+2
Beamwidth	65°	65°	65°	65°
Gain	7 dBi	14 dBi	11 dBi	6 dBi

- 610mm (24") x 365mm (14.3") - (LxD)

### AW3763

Frequency	617-894 MHz	1695-2690 MHz	3400-3800 MHz	5150-5925 MHz
Port	4+4	4+4	2+2	2+2
Beamwidth	65°	65°	65°	65°
Gain	7 dBi	14 dBi	11 dBi	6 dBi

- 610mm (24") x 365mm (14.3") - (LxD)



### AW3832

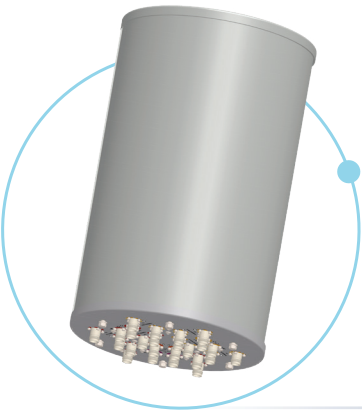
Frequency	698-960 MHz	1695-2690 MHz
Port	12	12
Beamwidth	65°	65°
Gain	7 dBi	14 dBi

- 610mm (24") x 365mm (14.3") - (LxD)

### AW3834

Frequency	698-960 MHz	1695-2690 MHz
Port	8	8
Beamwidth	65°	65°
Gain	7 dBi	14 dBi

- 610mm (24") x 365mm (14.3") - (LxD)



### AW3845

Frequency	698-960 MHz	1695-2690 MHz
Port	6	12
Beamwidth	65°	65°
Gain	10 dBi	14 dBi

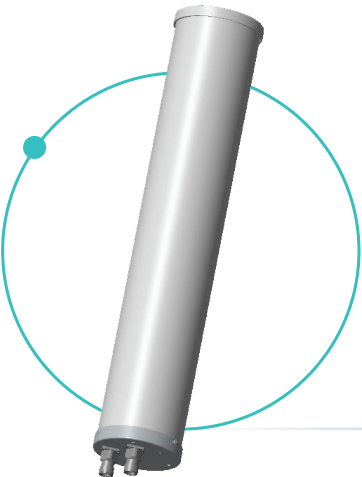
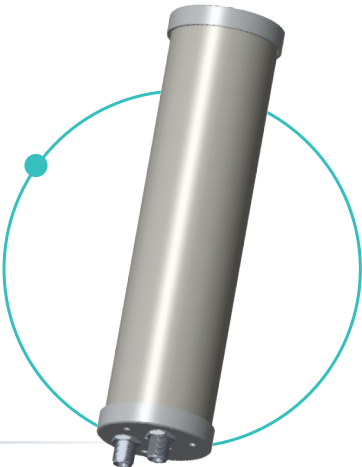
- 610mm (24") x 365mm (14.3") - (LxD)

## SMALL CELL OMNI DIRECTIONAL ANTENNAS

### AW3374

Frequency	3400-3800 MHz
Port	2
Beamwidth	360°
Gain	7 dBi

- 312mm (12.3") x 80mm (3.1") - (LxD)



### AW3388

Frequency	1710-2690 MHz
Port	2
Beamwidth	360°
Gain	6.7 dBi

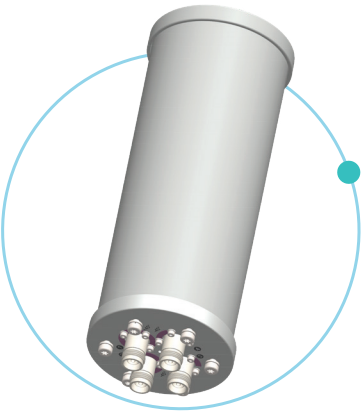
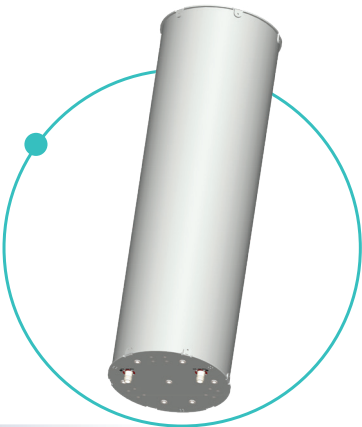
- 669.5mm (26.3") x 125mm (4.9") - (LxD)



## AW3464

Frequency	698-960 MHz
Port	2
Beamwidth	360°
Gain	6.5 dBi

- 1000mm (39.3") x 298mm (11.7") - (LxD)



## AW3499

Frequency	3400-3800 MHz
Port	4
Beamwidth	360°
Gain	6.5 dBi

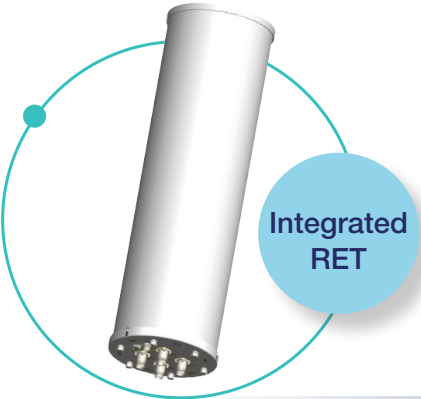
- 340mm (13.4") x 125mm (4.9") - (LxD)



## AW3613

Frequency	2496-2690 MHz
Port	4
Beamwidth	360°
Gain	8.5 dBi

- 750mm (29.5") x 220mm (8.7") - (LxD)



## AW3620

Frequency	2496-2690 MHz
Port	4
Beamwidth	360°
Gain	8.5 dBi

- 749mm (29.5") x 220mm (8.7") - (LxD)



## AW3625

Frequency	3300-3800 MHz
Port	2
Beamwidth	360°
Gain	8.5 dBi

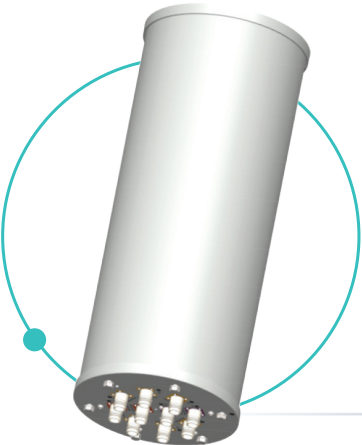
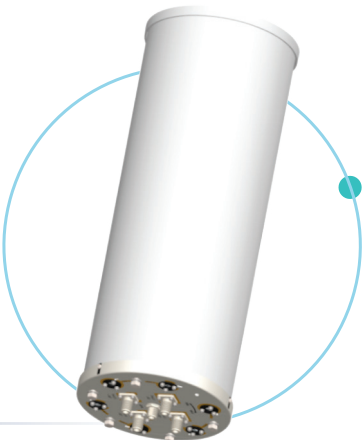
- 700mm (27.5") x 125mm (4.9") - (LxD)



### AW3672

Frequency	3400-3800 MHz
Port	4
Beamwidth	360°
Gain	8.5 dBi

- 600mm (23.6") x 220mm (8.6") - (LxD)



### AW3719

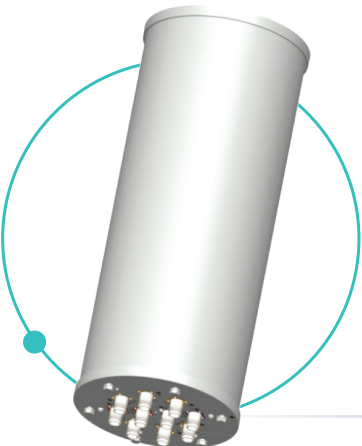
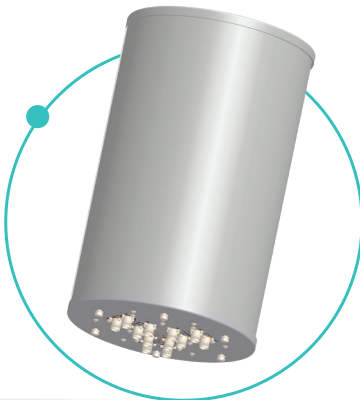
Frequency	1695-2690 MHz	3400-3800 MHz	5150-5925 MHz
Port	6	2	2
Beamwidth	360°	360°	360°
Gain	8 dBi	5 dBi	5 dBi

- 610mm (24") x 248mm (9.8") - (LxD)

### AW3747

Frequency	617-894 MHz	1695-2690 MHz	3400-3800 MHz	5150-5925 MHz
Port	4	4	2	2
Beamwidth	360°	360°	360°	360°
Gain	2 dBi	8 dBi	5 dBi	5 dBi

- 610mm (24") x 365mm (14.4") - (LxD)



### AW3768

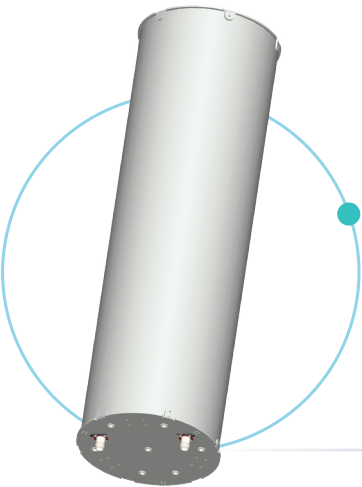
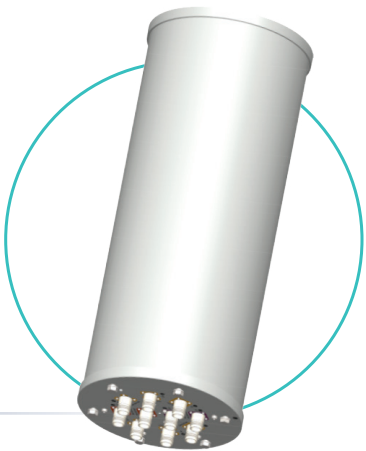
Frequency	1695-2690 MHz	3400-3800 MHz	5150-5925 MHz
Port	6	2	2
Beamwidth	360°	360°	360°
Gain	8 dBi	5 dBi	5 dBi

- 610mm (24") x 248mm (9.8") - (LxD)

AW3776

Frequency	2496-2690 MHz	3300-4200 MHz
Port	2	2
Beamwidth	360°	360°
Gain	5.5 dBi	7 dBi

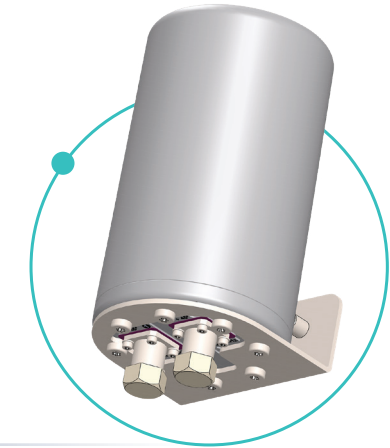
- 201mm (8.2") x 116mm (4.5") - (LxD)



AW3821

Frequency	703-803 MHz
Port	2
Beamwidth	360°
Gain	7.7 dBi

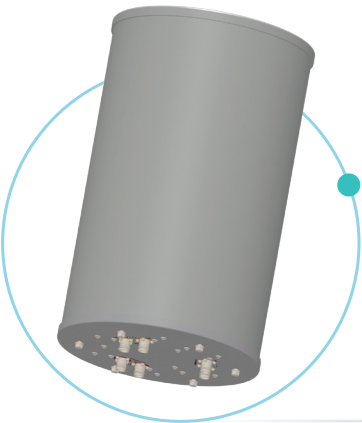
- 1300mm (51.1") x 298mm (11.7") - (Lx D)



AW3826

Frequency	2496-2690 MHz	3300-4200 MHz
Port	2	2
Beamwidth	360°	360°
Gain	5.5 dBi	7 dBi

- 201mm (8.2") x 116mm (4.5") - (LxD)



AW3848

Frequency	698-960 MHz	1695-2690 MHz
Port	2	4
Beamwidth	360°	360°
Gain	5 dBi	8.5 dBi

- 610mm (24") x 365mm (14.3") - (LxD)

## WHY CHOOSE ALPHA WIRELESS?

- + An Irish company, Alpha Wireless is a market-leading specialist in designing and manufacturing high performing, superior quality antenna solutions.

We work closely with network operators, neutral hosts, OEMs and WISP's to design and engineer Small Cell Solutions that help build a robust, cost effective wireless network that is future-ready.

#5G – OurFutureTransformed.

With the need for higher data capacity coupled with more stringent approval processes, existing models of network deployment are becoming increasingly difficult to deploy. Alpha Wireless is addressing this by.....Changing the way wireless networks are built.

### CONTACT US

#### **Australia Maser**

Unit 9, 15B Rodborough, PO Box 6298,  
Frenchs Forest, DC NSW 2086 Australia.  
E: [info@maser.com.au](mailto:info@maser.com.au)  
P: +61 29452 6062

#### **Europe**

Ashgrove Business Centre, Ballybrittas, Portlaoise,  
Co. Laois, R32 DTOA, Ireland.  
E: [sales@alphawireless.com](mailto:sales@alphawireless.com)  
T: +353 57 8633847

#### **US**

11322 W 79th Street, Lenexa, KS 66214, USA  
E: [sales@alphawireless.com](mailto:sales@alphawireless.com)  
T: +1 913 279 0008

Find out more at [www.alphawireless.com](http://www.alphawireless.com)

