



## **n78 C-Band Antenna Solutions**

Maximize the Value of Your Infrastructure Investment





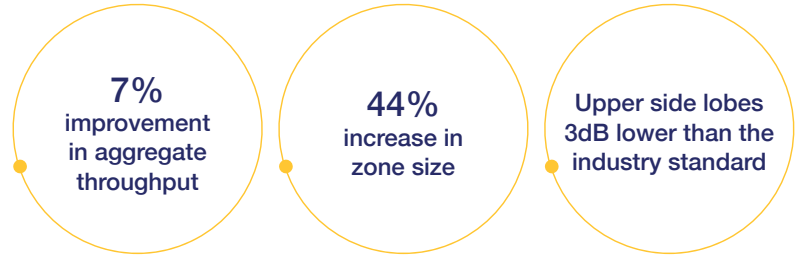
## Fulfill the Promise of C-Band Spectrum 3300 MHz - 4200 MHz

n78 C-band enables operators to access more spectrum to upgrade their networks to deliver ultra reliably and low latency 5G coverage. Yet C-band fades quickly from the tower, requiring more equipment and higher costs to serve an area. Alpha Wireless's innovative C-band platform mitigates the most significant challenges C-band poses, allowing operators to leverage this considerable spectrum opportunity.

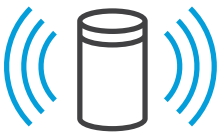
Alpha Wireless is your antenna partner. Since 2007, we've been designing and manufacturing our extensive selection of antennas in response to industry changes. With more than 1.5 million antennas deployed worldwide, we have the expertise to guide you in your C-band network journey.

### Proven Performance

Alpha Wireless C-band antennas give you maximum throughput.

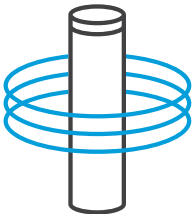


### Designed for Optimal Site Count



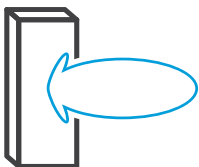
#### Full coverage in an Attractive Form Factor

Alpha Wireless C-band antennas enable operators to support more subscribers with higher speeds to maximize investment in network infrastructure and C-band spectrum. These antennas quickly pass zoning approvals with their pleasing, unobtrusive form factor.



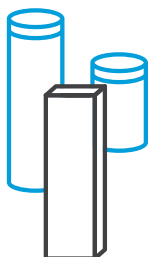
#### Fill in the Gaps

Our patent-pending hex-sided OMNI antenna is designed for gap-filling and delivering 360 degrees of horizontal coverage. It gives you stable performance across all ports, tilts and C-band frequencies. These antennas are true 4x4 MIMO OMNIs with minimal pattern ripple, eliminating nulls in the coverage area.



#### Designed to Deliver More

Alpha Wireless C-band antennas feature a highly focused main beam with upper elevation side lobes 3dB lower than industry standards. This design eliminates cell-to-cell interference, provides a 7% improvement in aggregate throughput and produces a 44% increase in the size of zones achieving maximum throughput.



#### Wide Selection

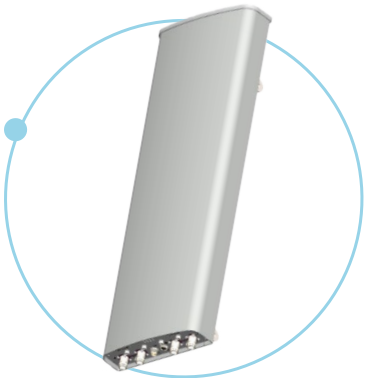
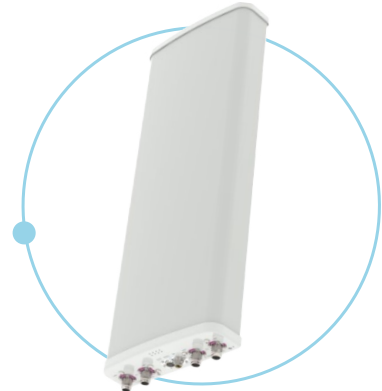
Alpha Wireless offers the broadest portfolio of C-band MIMO antennas on the market. These antennas incorporate advanced pattern shaping techniques and highly efficient low-loss materials. They improve CINR and maximize spectrum efficiency, enabling the RRU to deliver its full potential to an extended cell edge.

## C-Band Antennas

### AW3828-E-F Macro Panel with eRET

Frequency	3300-4200 MHz
Port	4
Beamwidth	65°
Gain	17.3 dBi
Tilt	T0° - T10°

Dimensions: 850mm (33.5") x 280mm (11") x 85mm (3.3") - (LxWxD)  
[Click here for full AW3828-E-F specs](#)



### AW3923-T0-F Macro Panel

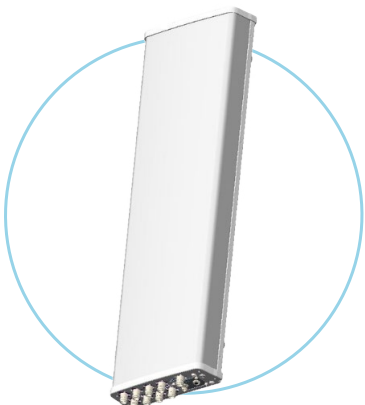
Frequency	3300-4200 MHz
Port	4
Beamwidth	65°
Gain	17.5 dBi
Tilt	T0°

Dimensions: 750mm (29.5") x 280mm (11") x 85mm (3.3") - (LxWxD)  
[Click here for full AW3923-T0-F specs](#)

### AW3924-T0-F Small Cell Panel

Frequency	3300-4200 MHz
Port	4
Beamwidth	65°
Gain	13 dBi
Tilt	T0°

Dimensions: 285mm (11.2") x 280mm (11") x 85mm (3.3") - (LxWxD)  
[Click here for full AW3924-T0-F specs](#)



### AW3876-E-F 8T8R Beamforming Panel

Frequency	3300-4200 MHz
Port	8
Beamwidth	65°
Gain	16 dBi
Tilt	T0° - T10°

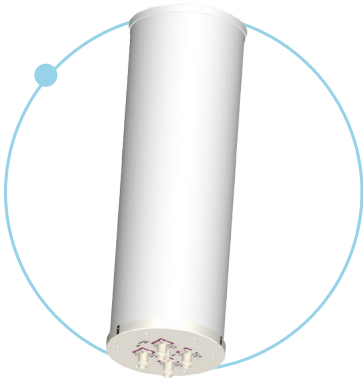
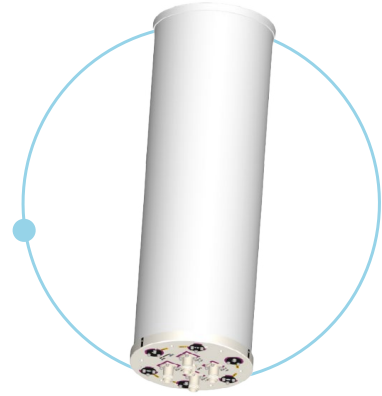
Dimensions: 1040mm (41") x 320mm (12.6") x 105mm (4.1") - (LxWxD)  
[Click here for full AW3876-T0-F specs](#)

## AW3938-M-F 4x4 Omni with eRET

<b>Frequency</b>	3300-4200 MHz
Port	4
<b>Beamwidth</b>	360°
Gain	11.5 dBi
<b>Tilt</b>	T0° - T10°

Dimensions: 850mm (33.5") x 248mm (9.8") - (L x Ø)

[Click here for full AW3938-M-F specs](#)



## AW3939-T0-F 4x4 Omni

<b>Frequency</b>	3300-4200 MHz
Port	4
<b>Beamwidth</b>	360°
Gain	11.5 dBi
<b>Tilt</b>	T0°

Dimensions: 850mm (33.5") x 220mm (8.6") - (L x Ø)

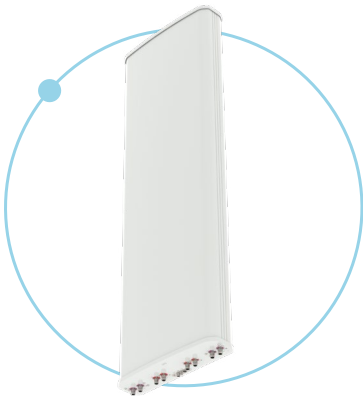
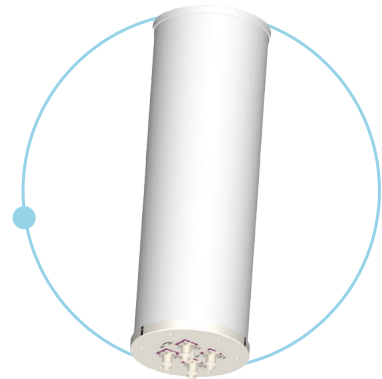
[Click here for full AW3939-T0-F specs](#)

## AW3941-T0-F 4x4 Compact OMNI

<b>Frequency</b>	3300-4200 MHz
Port	4
<b>Beamwidth</b>	360°
Gain	6 dBi
<b>Tilt</b>	T0°

Dimensions: 331mm (13") x 220mm (8.6") - (L x Ø)

[Click here for full AW3941-T0-F specs](#)



## AW3933-E-F Dual-band Panel

<b>Frequency</b>	617-698 MHz 3300-4200 MHz
Port	8
<b>Beamwidth</b>	65°
Gain	17/17 dBi
<b>Tilt</b>	T8° - T16° T0° - T10°

Dimensions: 1825mm (71.8") x 565mm (22.2") x 165mm (6.5") - (LxWxD)

[Click here for full AW3933-E-F specs](#)



**CONTACT US**

**Europe**

Ashgrove Business Centre, Ballybrittas, Portlaoise,  
Co. Laois, R32 DTOA, Ireland.  
E: sales@alphawireless.com  
T: +353 57 8633847

**US**

7301 W. 129th Street, Suite 150 Overland Park,  
KS 66213, USA  
E: sales@alphawireless.com  
T:+1 913 279 0008

**Australia  
Maser**

Unit 9, 15B Rodborough, PO Box 6298,  
Frenchs Forest, DC NSW 2086 Australia.  
E: info@maser.com.au  
P:+61 29452 6062

Find out more at [www.alphawireless.com](http://www.alphawireless.com)

