



# MULTIPOINT SMALL CELL

The multiport small cell antenna has been designed specifically for providing high capacity and coverage in densely populated areas such as amusement parks and sports venues.



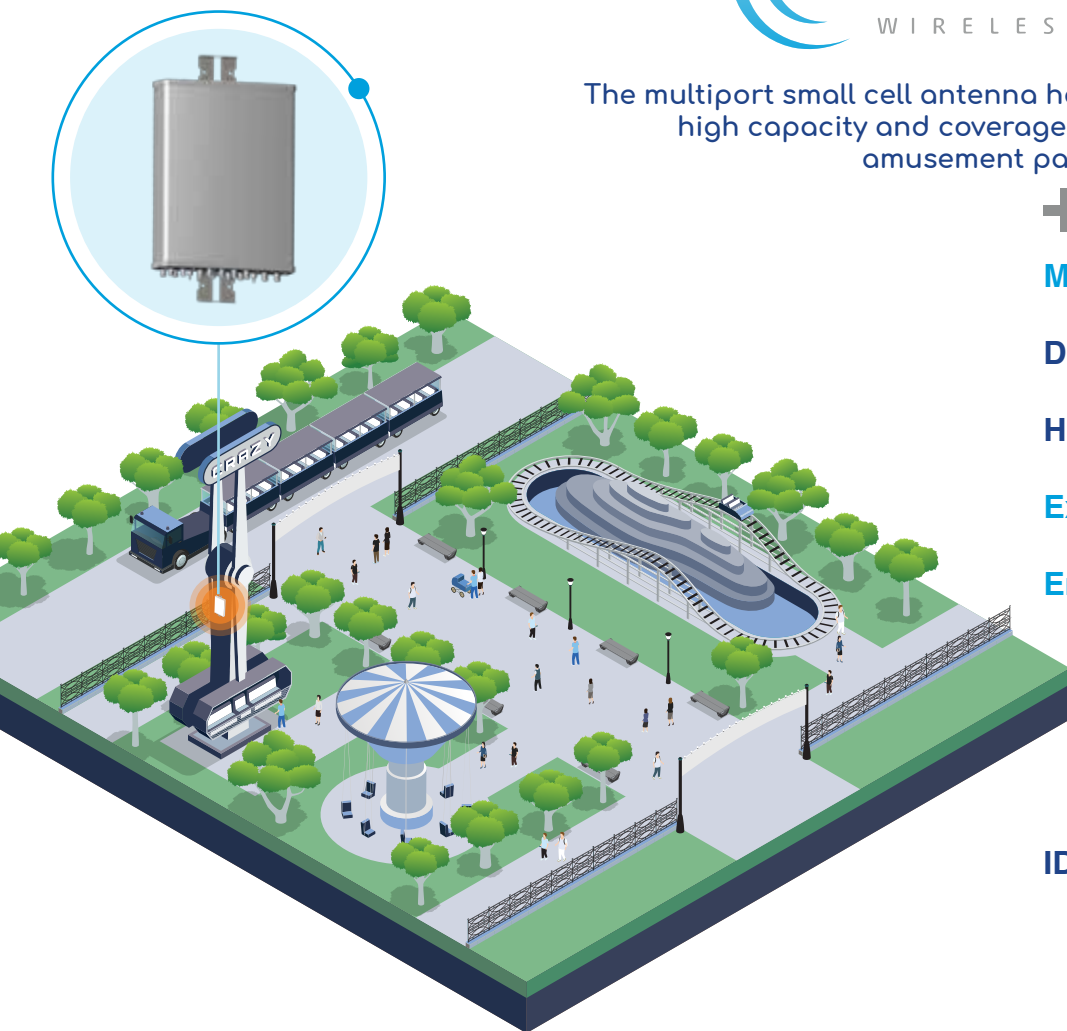
**Multiband, multiport** facilitates maximum utilization of spectrum holdings

Discreet, ultra-compact design ensures an **extremely low visual impact**

High port count, **enables multiple operators**

**Extended low band** capability down to 617 MHz

**Enclosed Remote Electrical Tilt (eRET)** option available



## IDEAL FOR:

APPLICATION  
IN DENSELY  
POPULATED  
VENUES

APPLICATION  
ON LAMP POSTS,  
UTILITY POLES,  
WALLS

SITES REQUIRING  
VARIABLE TILT

MODEL NUMBER	HEIGHT	LOW BAND FREQUENCIES		MID BAND FREQUENCIES		CBRS		LAA	
AW3724	24"	4 PORTS	617-894 MHz	8 PORTS	1695-2690 MHz	4 PORTS	3400-3800 MHz	2 PORTS	5150-5925 MHz
AW3725	48"	4 PORTS		8 PORTS		8 PORTS		4 PORTS	