



MULTIPOINT SMALL CELL

The multiport small cell antenna has been designed specifically for providing high capacity and coverage in densely populated areas such as amusement parks and sports venues.



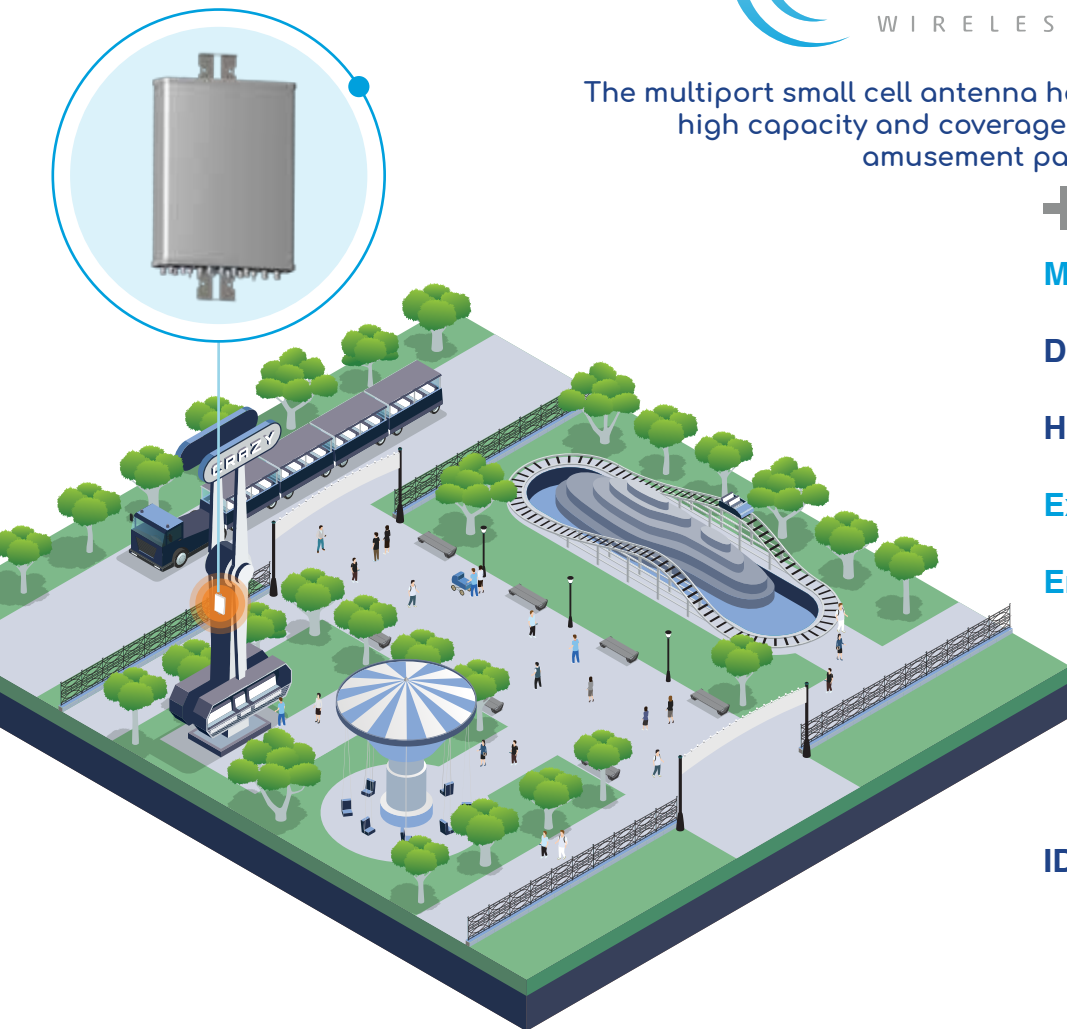
Multiband, multiport facilitates maximum utilization of spectrum holdings

Discreet, ultra-compact design ensures an **extremely low visual impact**

High port count, **enables multiple operators**

Extended low band capability down to 617 MHz

Enclosed Remote Electrical Tilt (eRET) option available



IDEAL FOR:

APPLICATION
IN DENSELY
POPULATED
VENUES

APPLICATION
ON LAMP POSTS,
UTILITY POLES,
WALLS

SITES REQUIRING
VARIABLE TILT

MODEL NUMBER	HEIGHT	LOW BAND FREQUENCIES		MID BAND FREQUENCIES		CBRS		LAA	
AW3724	24"	4 PORTS	617-960 MHz	8 PORTS	1695-2690 MHz	4 PORTS	3400-3800 MHz	2 PORTS	5150-5925 MHz
AW3725	48"	4 PORTS		8 PORTS		8 PORTS		4 PORTS	